

PALFINGER



SANY

ROUGH TERRAIN CRANE SRC750C



- ▷ **Lifting capacity:** 75 t
- ▷ **Boom length:** 11.8 - 45 m, 5 sections
- ▷ **Jib:** 16 m
- ▷ **Warranty term:** 2250 working hours or 18 months

**QUALITY
CHANGES
THE WORLD**

Superstructure

CAB

Unique, ergonomic, sound proof and corrosion resistant one-man-cab with laminated safety glasses, sliding door, comfortable and adjustable seat with safety belt, Radio, CD/MP3 and interior lightings. Independent Cab heaters. Roof window with steel bars for ideal all-round view, sun protection visor. Wipe and wash system. Control unit with joysticks, engine information and electrical horn. Fire extinguisher. Thermo protected handrails as a standard. Air conditioner as an option.



Engine

DongFeng Cummins 6-cylinder diesel engine, ISDe285 30, volumen 6.7 liter, turbocharged with water coolant, working hours meter, coolant level indicator, 210 kW/285,5 HP by 2500 rotations per minute, maximal rotational moment 970 nM by 1500 rotations per minute. Audio-visual warning system when engine fails. Fuel tank capacity 300l.

Boom

Length from 11.8 to 45 m, 5 section telescopic, U-shaped, with safety valve on telescopic cylinder. Boom head with 6 sheaves. Lifting boom has one double action hydraulic cylinder (-2° to $+80^{\circ}$) with integrated safety valve. Lattice jib 16 m with fixed angles of tilt 0, 20, 40 degree.

Slewing system

360° continuously slewing, planetary reduction slewing gear, working and static brakes while driving. Rotation speed from 0 to 2.0 rpm.

Counterweight

One piece of 9.5 ton, fixed on the slewing platform.

Hydraulic system

Load sensitive axial piston pump, one 3 tier gear pump. Hydraulic tank with level indicator. Hydraulic system pressure measuring gauge.

Safety devices

Colour monitor in Russian and English language indicates important parameters: Luffing angle, load moment, load weight, working radius, maximum payload, hoisting height etc. Hoisting height limiter warning signal and indication of hoisting function blocking. Payload limiter with audible visible warning system. Anti-collision and zone protection system, which helps to set up borders of working zone in advance. If borders are neglected the crane is blocked. Lock check valve on the telescopic cylinders. Controller for the 3 last wire-circuits on the winch.



Main winch

Axial piston pump with planetary reduction hoisting gear, auto multidisc brake. Rope length 245 m, diameter 20 mm.



Auxiliary Winch

Axial piston pump with planetary reduction hoisting gear and auto multidisc brake. Rope length: 145 m, diameter 20 mm

Hook block

Hook block 75 ton capacity with 6 sheaves for fast rope reeling, rotatable hook with locking system weight 810 kg. Hook with the ball weight 160 kg. Hook load capacity 7.5 tons.

Electrical system

DC 24 V, Full lighting package: including Headlights, rear lights, brake lights, turn signals, reflectors, working lights, yellow lights fixed on the cab and main boom working lights.

Chassis

Outriggers

4 section hydraulic driven outrigger with 3 working position: 0 %, 50 % and 100 %.

Axles

2 steering driving axles, front axle fixed to the frame. Rear axle with auto-block system.

Brake system

Driving Brake: Hydraulic double flow brake system for all wheels. Emergency and Park brake of spring-hydraulic type.

Tyres

4 tubeless tires 29.5R25

Transmission

Wheel formula: 4x4. Four different steering modes. Transfer gear box with speed reduction gearing. 6 forward and 6 reverse gears. Front axle is not active by travelling in mode 4 x 2.

Technical parameter

Weigh and dimensions

Overall length	14248 mm
Overall width	3340 mm
Overall height	3800 mm
Axle distance	4264 mm
Overall weight	53500 kg
Load of front axle	27600 kg
Load of rear axle	25900 kg

Chassis

Engine modell	DongFeng Cumnis ISDe 285 30
Rated engine power	210kw/2500rpm
Rated engine torque	970Nm/1500rpm
Max. traveling speed	25km/h
Working fuel consumption per hour	20 L
Turning radius	7500 mm
Min. turning radius of boom head	11700 mm
Wheel formula	4x4
Min. ground clearance	400mm
Approach angle	20°
Departure angle	19°
Max.gradeability	75%
Standard toolbox	included
Fire extinguisher	included
Cab heater	included

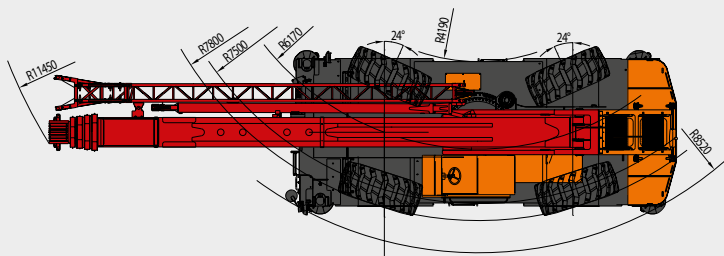
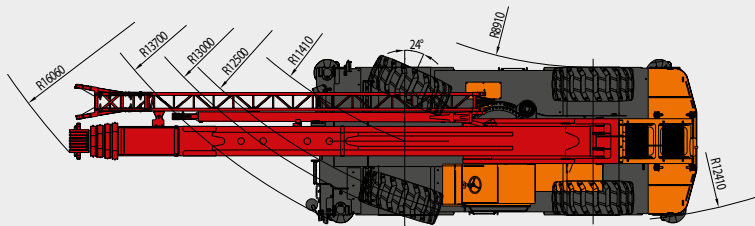
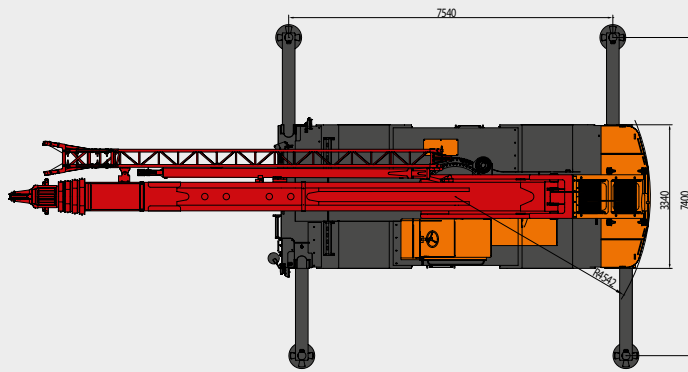
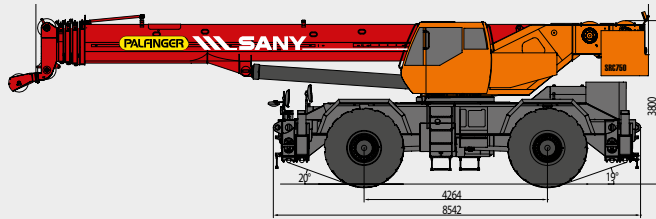
Superstructure

Max. rated lifting capacity	75 t	
Min.Rated range	3 m	
Tail slewing radius of swing table	4.542m	
Section	5	
Boom shape	U-Shaped	
Max.lifting moment	Базовая стрела Full-extend boom Full-extend boom	257.9 t·m 123.2 t·m 66 t·m
Boom length	Base Boom Full-extend boom Full-extend boom +jib	11,8 t·m 45 t·m 61 t·m
Outrigger span	7,52 x 7,4 m	
Jib offset	0°/20°/40°	
Max.single rope lifting speed of main winch (no load)	125 m/min	
Max.single rope lifting speed of auxiliary winch (no load)	125 m/min	
Full extension/retraction time of boom	120/130 s	
Full lifting/descending time of boom	70/100 s	
Slewing speed	2.0 r/min	
Temperature range	-25 °C ~ +40 °C	
High Voltage Detector	included	

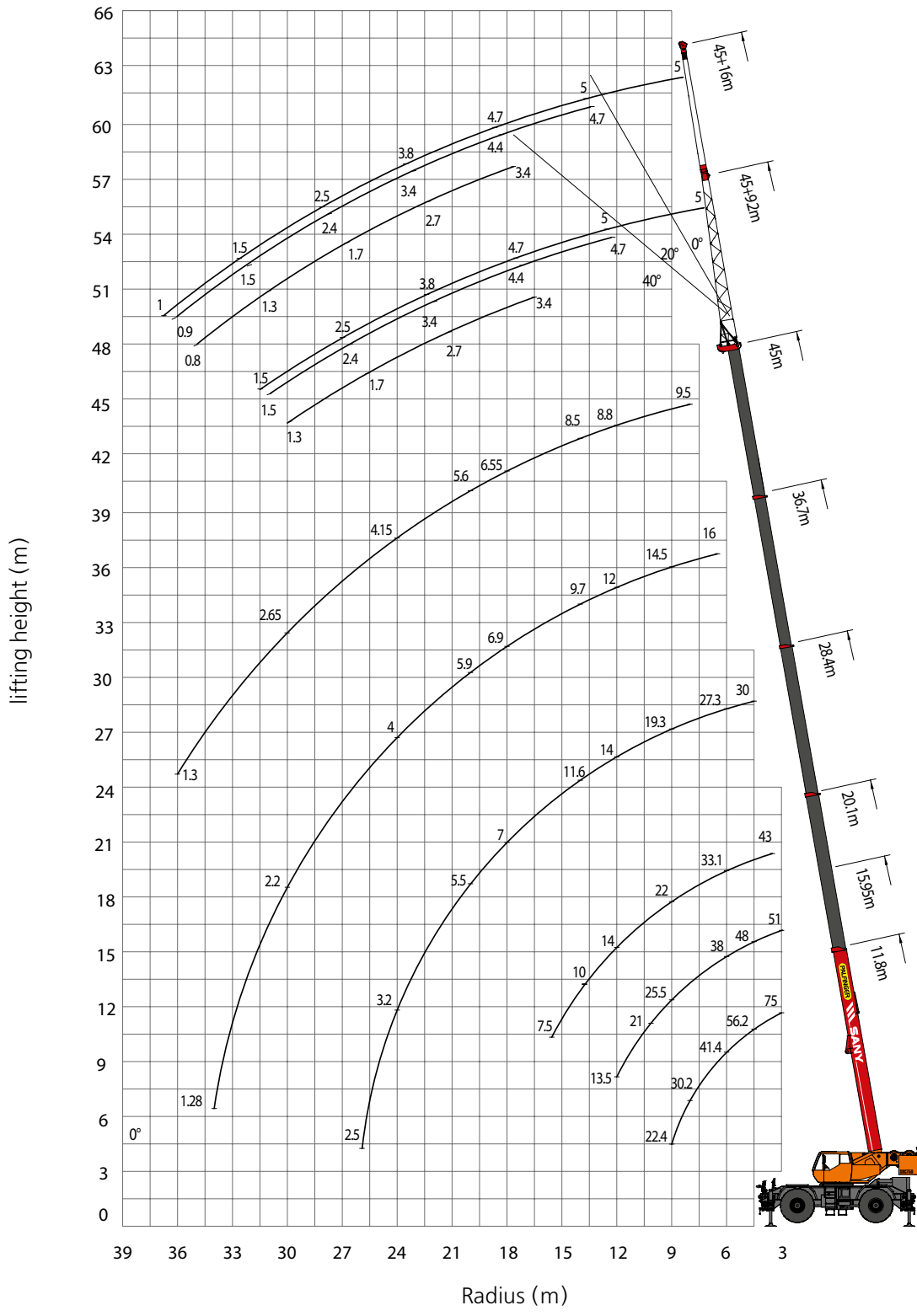
Additional equipment available on request

Aircondition	included
Arctic Package for temperature range till	-40°C

Product dimensions



Working ranges



Load charts for main boom

Outrigger span 7.52 x 7.4 m							
Ranges (m)	Length of boom (m)						
Meter	11.8	15.95	20.1	28.4	36.7	40.85	45.0
3.0	75000	51000					
3.5	72000	51000	43000				
4.0	63000	51000	43000				
4.5	56200	48000	40500	30000			
5.0	50400	45000	38000	30000			
5.5	45500	42000	35400	28500			
6.0	41400	38000	33100	27300			
6.5	38000	35500	31000	26000	16000		
7.0	35000	33000	28500	24600	16000	9500	
8.0	30200	28900	25000	22000	15000	9500	9500
9.0	22400	25500	22000	19300	14500	9500	9500
10.0		21000	19700	17300	13900	9500	9200
11.0		17500	17000	15500	13000	9500	9000
12.0		13500	14000	14000	12000	9500	8800
14.0			10000	11600	9700	9300	8500
16.0			7500	9000	8100	7800	7700
18.0				7000	6900	6600	6550
20.0				5500	5900	5650	5600
22.0				4200	5000	4850	4800
24.0				3200	4000	4150	4150
26.0				2500	3000	3600	3600
28.0					2500	3100	3110
30.0					2200	2400	2650
32.0					1700	2000	2150
34.0					1280	1550	1700
36.0						1200	1300
Min. elevation	0°	0°	0°	0°	0°	0°	30°
Parts of line	12	9	9	6	4	4	3

Load charts for main boom

Ranges (m)	Outrigger span 5,25m x 360° (kg)						
	11.8	15.95	20.1	28.4	36.7	40.85	45
3	70000	51000					
3.5	65000	51000	43000				
4	60000	51000	43000				
4.5	52000	48000	40500	30000			
5	45000	40000	38000	30000			
5.5	38000	34000	31000	28500			
6	32000	29300	27000	27300			
6.5	27400	26000	23800	26000	16000		
7	24000	23000	21000	22000	16000	9500	
8	18500	17500	17000	17000	15000	9500	9500
9	14400	14000	13500	14000	13800	9500	9500
10		11200	10800	11800	12000	9500	9200
11		9200	8900	10200	10300	9500	9000
12		7700	7300	8800	9000	9500	8800
14			4900	6300	7000	7400	7000
16			3200	4600	5200	5600	5500
18				3300	3900	4300	4200
20				2300	2900	3300	3100
22				1500	2100	2500	2200
24					1500	1800	1600
26					1000	1300	1100
Min. elevation	-	-	-	-	35.5	39.7	43.7
Parts of line	12	9	9	6	4	4	3

Load charts for main boom

with load on hook while travelling the max speed is 4 km/h

Ranges (m)	11.8	15.95	20.1	28.4
4	16700			
4.5	14800			
5	13200			
5.5	11800	11000		
6	10700	10000	9800	
6.5	9600	9200	8800	
7	8700	8200	7900	9100
8	7100	6700	6300	7500
9	5900	5400	5100	6300
10		4400	4000	5200
11		3500	3100	4300
12		2700	2400	3600
14			1200	2300
16				1400
Min. elevation	-	-	26.3°	40.1°
Parts of line	6	6	6	6

Load charts for JIB

Range(m)	Main boom + jib (m)					
	45+9.2			45+16		
	0°	20°	40°	0°	20°	40°
80	5000	4700	3400	3000	2900	2000
79	5000	4700	3400	3000	2800	2000
78	5000	4700	3400	3000	2800	2000
77	5000	4600	3400	3000	2700	1900
76	5000	4500	3300	3000	2700	1900
75	5000	4400	3300	3000	2700	1900
73	5000	4200	3200	3000	2600	1900
70	4700	4100	3100	3000	2500	1900
68	4300	3700	3000	3000	2400	1800
65	3800	3400	2700	2400	2300	1700
63	3300	3000	2300	2200	2200	1700
60	2500	2400	1700	2000	1900	1600
58	2000	2000	1600	1800	1700	1400
55	1500	1500	1300	1500	1400	1000
53	1300	1200	1000			
50	1000	900	800			
Min. elevation	45	45	47	50	52	52

① The values given in the table are the rated lifting capacities of the crane on an even and solid ground when the crane is in the leveling state. The values above the thick real line in the table are dependent on the strength of crane, and the values below the thick real line are dependent on the stability of crane.

② The operating range in the table refers to the actual range after hoisting.

③ The values of rated loads depending on stability surely follow ISO 4305.

④ The rated lifting capacity in the table includes the weight of lifting hook (the main lifting hook weights 810 kg and auxiliary lifting hook 160kg) and hoisting tools.

⑤ If the actual boom length and range are between two values, the rated lifting capacity determined by the longer boom and the larger range shall be selected for the lifting operation.

Service

We provide you with high-quality after-sales service and commit ourselves to the following THREE core principles:

- ▷ **ONE:** Give us ONE call and we will take care of your problem
- ▷ **TWO:** We offer TWO days of free training for your operators
- ▷ **THREE:** We do THREE inspections prior shipping the machine to you

We provide on-site service within 48 hours by our dealers, service stations or service specialists.

Our dealers, service stations and service specialists are regularly trained by PALFINGER SANY. The service equipment they use will enable them to provide you high quality service.

For PALFINGER SANY it is extremely important to provide a fast spare part supply for the product range offered to you. Therefore, we operate spare parts center with more than 4.100 parts in stock. Parts will be dispatched within 24 hours or can be directly picked up by yourself in our warehouse during our office hours.

PALFINGER SANY takes technical problems very serious. In the case of any technical issues, the company offers an extended warranty period of 2250 hours or 18 months from putting cranes into operation.



PALFINGER SANY will provide you with high-quality after-sales service. Our service will help you solve your problem the fastest and most reliable way.

SANY Heavy Industry Co. Ltd. | Area of production and assembling



Product overview

▷ Truck Cranes



STC250
Max. lifting capacity: 25 t, Main boom: 4 sections,
Extension boom: 10.65-33.5 m, Chassis: 6x4x2



STC250C-5
Max. lifting capacity: 25 t, Main boom: 5 sections,
Extension boom: 10.5-39.5 m, Chassis: 6x4x2



STC300B
Max. lifting capacity: 30 t, Main boom: 4 sections,
Extension boom: 10.65-33.5 m, Chassis: 8x4x4



STC500
Max. lifting capacity: 50 t, Main boom: 5 sections,
Extension boom: 11.5-42.5 m, Chassis: 8x4x4



STC800
Max. lifting capacity: 75 t, Main boom: 5 sections,
Extension boom: 11.8-45 m, Chassis: 8x4x4



STC1000
Max. lifting capacity: 100 t, Main boom: 6 sections,
Extension boom: 13.3-60 m, Chassis: 10x6x6



STC1300
Max. lifting capacity: 130 t, Main boom: 6 sections,
Extension boom: 13.3-78.1 m, Chassis: 10x6x6

▷ Rough Terrain Cranes



SRC350C
Max. lifting capacity: 35 t, Main boom: 4 sections,
Extension boom: 10-31.5 m, Chassis: 4x4x4



SRC550C
Max. lifting capacity: 55 t, Main boom: 4 sections,
Extension boom: 11.25-34.5 m, Chassis: 4x4x4



SRC750C
Max. lifting capacity: 75 t, Main boom: 5 sections,
Extension boom: 11.8-45 m, Chassis: 4x4x4

▷ All Terrain Cranes



SAC1800
Max. lifting capacity: 180 t, Main boom: 6 sections,
Extension boom: 13.5-62 m, Chassis: 10x8x10



SAC2200
Max. lifting capacity: 220 t, Main boom: 6 sections,
Extension boom: 13.5-62 m, Chassis: 10x8x10



SAC3000
Max. lifting capacity: 300 t, Main boom: 7 sections,
Extension boom: 15.4-80 m, Chassis: 12x8x12

* Products shown in the leaflet do not always correspond to the standard version.
Country-specific regulations must be observed. Dimensions may vary.
Subject to technical changes, errors and translation mistakes.

CONTACT DETAILS

PALFINGER SANY
International Mobile Cranes Sales GmbH
F.-W.-Scherer Straße 24 | 5020 Salzburg | Austria
☎ +43 662 4684-0 | 📠 +43 662 4684-2437
✉ info@palfinger-sany.com
www.palfinger-sany.com